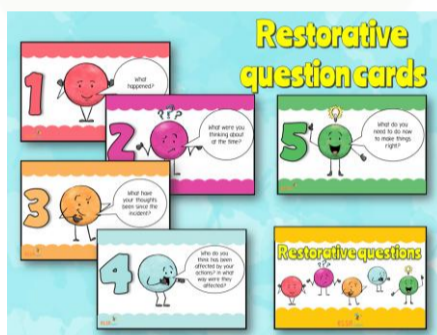


# Education Inclusion Family Advisor Newsletter June 2025

**Education Inclusion Family Advisors** are linked to Primary Schools and are available to provide information, support and signposting for parents. We are available via schools, and providing phone and email support. Feel free to get in touch via the contact details at the bottom of this newsletter.

## Parenting Top Tip Restorative Conversations

After your child has calmed down after a meltdown, restorative conversations can help to mend relationships. They give your children a chance to listen, reflect, empathise and make things right. It is also a learning opportunity for everyone to plan how to deal with things differently in the future.



\*Reference - ELSA

**Step 1** – What happened? Let your children tell the story.

**Step 2** – What were you thinking about at the time?

**Step 3** – What have your thoughts been since?

**Step 4** – Who has been affected by your actions? In what way?

**Step 5** – What do you need to do now to make things right?

## Treasure Hunt!

The sun is shining, and it is time for a treasure hunt! Kids love treasure hunts especially if there is a treat at the end. You could make your treasure chest a matchbox or go looking for things to spot all around you - a post box, a road sign... Not only is this free and super fun but it gives your children a chance to see writing all round them, practice reading and there will be loads of lovely chat!



## Carer's week – 9<sup>th</sup> -15<sup>th</sup> June

EIFAs work in partnership with Centre 33 to support Young Carer's in our school communities. Young carers are children under 18 with caring responsibilities. Visit <https://centre33.org.uk/help/caring/> to find out more about the support available for children with caring responsibilities.



Does your child have, or potentially have, an additional need or disability? **Pinpoint** ([www.pinpoint-cambs.org.uk](http://www.pinpoint-cambs.org.uk)) have lots of information, advice and tips. For **Cambridgeshire's Local Offer** go to [www.cambridgeshire.gov.uk/residents/children-and-families/local-offer](http://www.cambridgeshire.gov.uk/residents/children-and-families/local-offer)

Contact me directly on: ☎ 07585 403316 or  
✉ [lorraine.simon@cambridgeshire.gov.uk](mailto:lorraine.simon@cambridgeshire.gov.uk)